

# CAPABILITY STATEMENT



## WOLFPACK HIRE

LABOUR HIRE AND RECRUITMENT SPECIALISTS

[WWW.WOLFPACKHIRE.COM](http://WWW.WOLFPACKHIRE.COM)





# EMPOWERING YOUR BUSINESS

Wolfpack Hire is a leading specialist in labour hire and recruitment, providing tailored staffing solutions for businesses. With a dedicated personal Relationship Manager, we ensure the right talent is matched to your needs for both short- and long-term placements.

We are committed to providing competitive rates and a straightforward approach, ensuring our clients receive the ideal candidates to help them exceed their targets and thrive in their industries.

Our mission is to empower businesses by forging strong partnerships tailored to their unique needs. We are dedicated to sourcing top-tier talent that drives growth and aligns with our clients' vision and values.

With decades of recruitment experience, our team of specialists offers professional consulting at every step of the hiring process.

[WWW.WOLFPACKHIRE.COM](http://WWW.WOLFPACKHIRE.COM)



# WHAT WE OFFER

We view this as a genuine partnership, finding the right people for your business helps you grow and in turn us.

With a nationwide team of recruitment specialists, we're here to support your business. Whether you need short or long-term placements, we offer flexible options, including staff via our labour hire division or direct recruitment.



## PERSONALISED CONNECTIONS

Unlike many recruitment specialists who place you in a generic pool of recruiters, we take a personalised approach. Your business is our primary focus. We assess your unique needs and assign a dedicated Relationship Manager who has the expertise to find candidates that match your company's values and culture.

Our Relationship Manager dedicates time to understand your business thoroughly. We employ various strategies to ensure you receive the most suitable candidates. Typically, we have to interview around 10 candidates to get to 1 person that we are happy to present to you.

## HOW PROACTIVE EFFORTS YIELD IMPACTFUL PLACEMENTS

We build strong relationships and maintain open communication to refine our processes for the host employer and candidates.

Engaging the host employer and providing timely feedback has improved candidates' success in completing their employment terms, leading to direct payroll placement opportunities as PAYG employees.



# YOUR RECRUITMENT JOURNEY

## 1 | Connect & Brief

In these important first stages, the host employer communicates their needs, specifying the type and number of staff needed, any specific role requirements, start dates and project duration.

## 2 | Agreements Secured

During step two, we coordinate with you on our rates and obtain approval, followed by signing the T&Cs and implementing insurance specific to your business.

## 3 | Sourcing & Selection

Candidates are screened for the role, and interviews are conducted, sending suitable candidates to the host employer for review.

## 4 | Final Interviews

The host employer will interview the shortlisted candidates before deciding on the new hire/s.

## 5 | Clearance Assessments

All necessary background checks, including police and medical, will be completed by Wolfpack Hire.

## 6 | Onboarding and Placement

Successful candidates will be onboarded by Wolfpack Hire and allocated to the relevant roles within the host employer business.





## MORE IN HOUSE SERVICES

- **Project and Delivery Managers** to oversee successful project execution.
- **Skilled General Managers** available to lead your business on a part-time or full-time basis.
- **Development Managers** to plan and direct your projects, offering tailored solutions to drive business growth.
- **Power Modelling services by HOMER Pro experts.**
- **Business Analysts** who provide in-depth market segment insights and presentations.

### COMING SOON

Generator hire and additional professional hire services tailored to meet your business goals and needs.

[WWW.WOLFPACKHIRE.COM](http://WWW.WOLFPACKHIRE.COM)





# GLOBAL OPPORTUNITIES

You'll gain access to a global network, connecting you with the right contractors and OEMs tailored to your business needs.

In addition to these services, our extensive team of specialists across the country is here to support your business.

Through our experienced Business Development Managers we are ready to step in and elevate your business projects to the next level internationally.



[WWW.WOLFPACKHIRE.COM](http://WWW.WOLFPACKHIRE.COM)



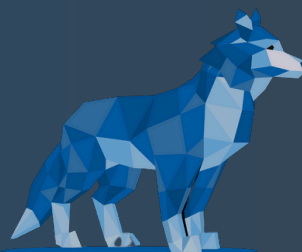
# OUR CLIENTS

MIRComm  
GROUP



## 📍 HEAD OFFICE

5/71 Motivation Drive  
Wangara WA 6065



WOLFPACK HIRE

E: [info@wolfpackhire.com](mailto:info@wolfpackhire.com)

P: 1800 705 986

W: [www.wolfpackhire.com](http://www.wolfpackhire.com)